

Under-The-Chin Face Mask

By Gilbert Muniz

Please read all instructions prior to beginning. This pattern was developed for a larger face but can easily be adapted to a smaller face. Simply shrink on a photocopier to get your desired size.

All seam allowances are $\frac{1}{4}$ inch except where noted. If you adjust the size, continue to use $\frac{1}{4}$ inch seam allowance; however, you might need to adjust the casing to fit the sides of the mask body.

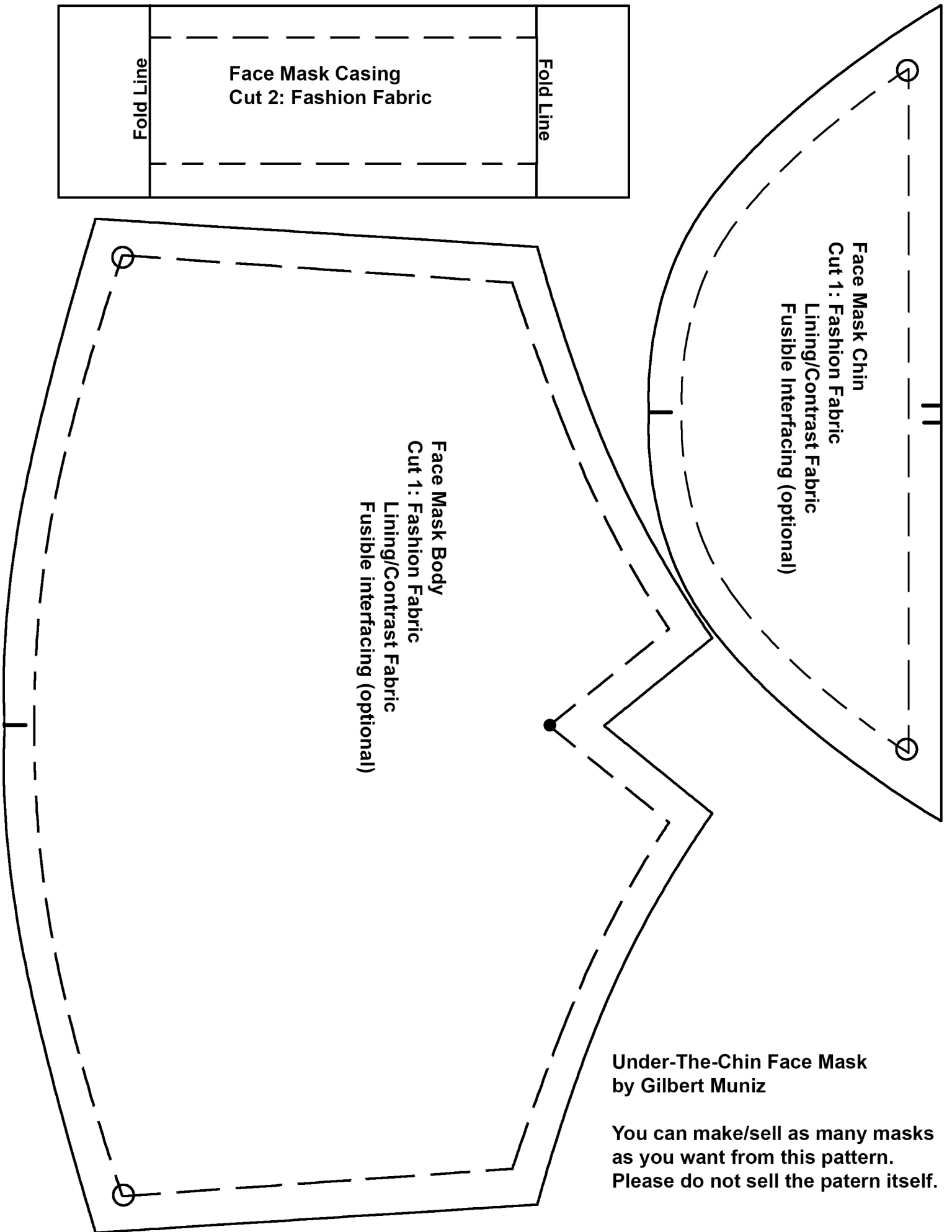
If you are using fusible interfacing, apply it to wrong side of fashion fabric layer, following manufacturer's instructions.

Feel free to make/sell as many masks as you want from this pattern. Please do not sell the pattern.

When you print the pattern, print the actual size. Do not "fit to media."

Construction:

- 1 – With right sides together, sew nose dart on the fashion fabric mask body. Press open the dart seam.
- 2 – Pin the single notches of the mask body and chin, right sides together. Match circles on one end and pin. Repeat for other end. Starting on one end, sew seam from matched circles, stretching the chin piece to fit the seam – this cups the piece ensuring a better fit.
- 3 – Repeat steps 1-2 for lining fabric.
- 4 – With right sides together, sew the top (nose dart) seam. Press seam open.
- 5 – With right sides together, match double notches on lower seam. Sew seam.
- 6 – Turn face mask right side out. Press the seams so that no lining fabric shows to the outside.
- 7 - Topstitch $\frac{1}{4}$ inch away from nose dart sewn edge, making a narrow casing. If desired, insert a twist-tie, chenille stem piece into the stitched channel to form a nose pincher. Take your time getting it past the center nose dart. On either end of the twist tie (not THROUGH the twist tie), stitch vertically within the topstitched channel – this prevents the twist tie from sliding around the channel.
- 8 – Fold on casing fold lines as indicated on the pattern. Topstitch $\frac{1}{2}$ inch from the folded edge on both ends.
- 9 – With right sides together pin one raw edge of a casing to one raw side edge of the face mask body. Stitch using $\frac{1}{4}$ inch seam allowance. Trim seam allowance to $\frac{1}{8}$ inch. Press seam allowance to casing.
- 10 - Fold in remaining seam allowance on casing. Pin folded edge to the stitching line of the sewn casing seam. Press well to crease casing. On fashion fabric side of mask, top stitch close to seam edge being sure to catch the folded edge underneath.
- 11 – Repeat with other casing on other raw edge of mask body.
- 12 – Hold mask up to face to determine elastic length. Cut elastic to fit through casing and around ear, or behind ear as desired. Be sure to cut a little extra to tie a knot. Slip the elastic through the casing with either a safety pin or bodkin. Tie a small knot in the elastic, forming a loop. Tug the knot into the casing so it will not bother your ears. Repeat for other casing.



Under-The-Chin Face Mask
by Gilbert Muniz

You can make/sell as many masks
as you want from this pattern.
Please do not sell the pattern itself.